
CITY OF KELOWNA

MEMORANDUM

Date: October 17, 2007
File No.: 6120-20
To: City Manager
From: Parks & Landscape Planner
Subject: Proposed Park Naming: Carney Park

RECOMMENDATION:

THAT the neighbourhood park at Quail Ridge be named "Carney Park" in honour of Tom Carney and the Carney Family.

BACKGROUND:

The Carney Family has made a number of significant contributions to the City over the years. The prominent pioneer family arrived in the Okanagan in the early 1890s farming in both the Ellison and Rutland areas. Tom Carney was born in 1898 and went on to raise Aberdeen Angus cattle on the farm now known as the TC Ranch and on land occupied by Pier Mac and the Quail Ridge neighbourhood. Tom Carney was a loyal supporter of his community, and his contributions included being a long term election official at Ellison School, donation of land for St. Theresa's Cemetery, donation of money and equipment to the Pandosy Mission and preservation efforts for the Brent's Grist Mill.

The park is located on a high point within the Quail Ridge Neighbourhood overlooking the original Carney Ranch, the Tutt Farm and the old Ellison School House where many of the Carney children were educated. The park will be developed this fall in partnership with a local developer as a neighbourhood park with a children's play area, grass field, shrubs & trees, a nature trail and lookout point.

Naming of the park as illustrated by Enclosure I in honour of Tom Carney and the Carney Family will recognize their civic contributions. The naming has the support of the community, including the Quail Ridge Residents' Association, the Okanagan Historical Society, the Central Okanagan Heritage Society, the Kelowna Museum, and is in keeping with the park naming policy.

INTERNAL CIRCULATION TO:

- ☐ Director of Recreation, Parks & Cultural Services
- ☐ Parks Manager

Considerations that were not applicable to this report:

FINANCIAL/BUDGETARY CONSIDERATIONS:
LEGAL/STATUTORY PROCEDURAL REQUIREMENTS:
LEGAL/STATUTORY AUTHORITY:
EXISTING POLICY:
PERSONNEL IMPLICATIONS:
TECHNICAL REQUIREMENTS:
EXTERNAL AGENCY/PUBLIC COMMENTS:
ALTERNATE RECOMMENDATION:

Submitted by:



Terry Barton
Park & Landscape Planner

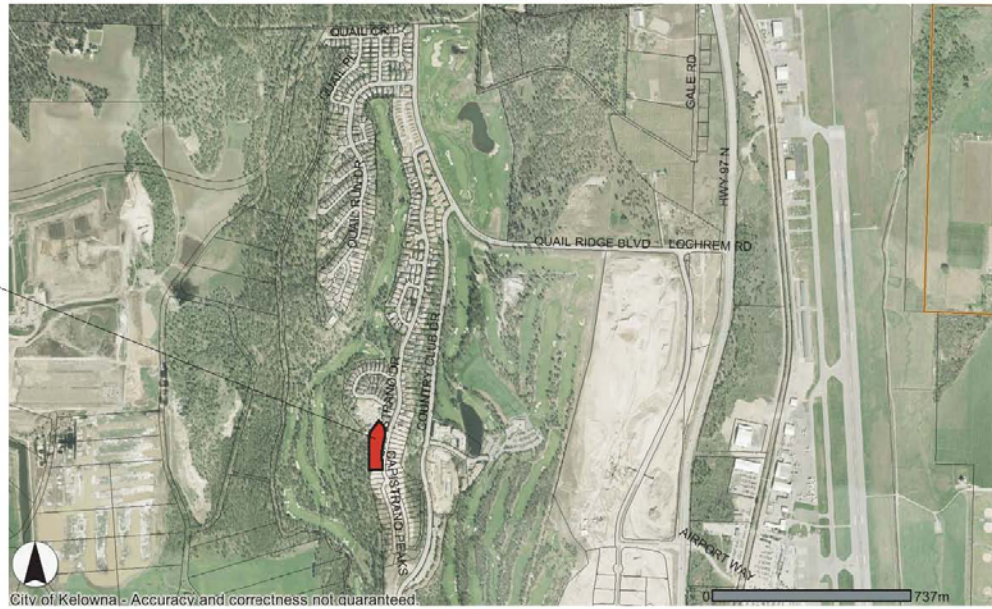


Approved for Inclusion:

Attachments: Enclosure I – Location Map

cc: Director of Recreation, Parks & Cultural Services
Parks Manager

PROPOSED NAMING OF
PARK TO CARNEY PARK



Enclosure I - Park Location

June 6, 2007

